



How to move High-Risk Foods and Feed of Non-Animal Origin (HRFNAO) from Great Britain (GB) to Northern Ireland (NI) or the EU from 1 January 2021

This process is for HRFNAO listed in Annex II of EU Regulation 2019/1793, and food and feed originating in third countries following the accident at the Chernobyl nuclear power station Regulation (EU) 2020/1158. To find out if your commodity must follow this process please review the applicable legislation. Please note that HRFNAO listed in Annex I of the 2019 Regulation are not covered by this process map: these goods do not require certification or sampling prior to export.

This process commences when the GB Trader has received the consignment and re-packaged or re-processed it for movement, as per their standard procedures.

From 1 January 2021, an arrangement is in place which allows Authorised Traders such as supermarkets and their trusted suppliers to move some goods from GB to NI without the need for official certification until 1 October 2021. Authorised Traders do not need to follow this process but must ensure a STAMNI compliance declaration accompanies their assignment. You must still use TRACES-NT to pre-notify. All other consignments of food and feed exported to Northern Ireland that would normally be subject to SPS controls will still be subject to controls.

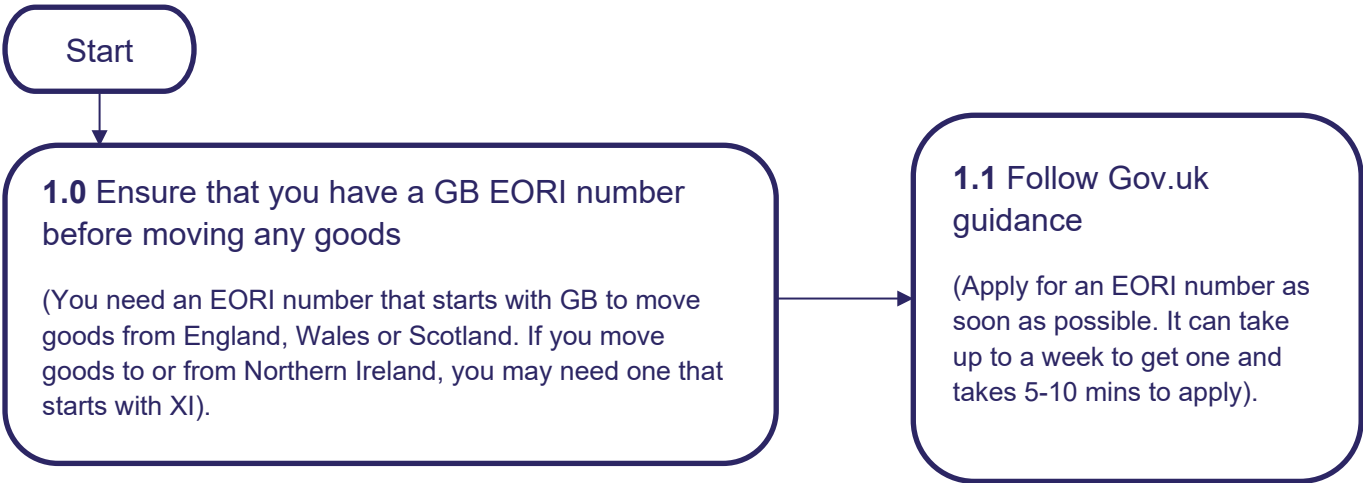
If a GB Trader has been subject to sampling for aflatoxins as part of checks at a BCP on entry to GB and no further processing or alteration of the commodity occurs, they may use those lab reports to apply for the Official Certificate as long as they are within the required validity period.

Food Business Operators should ensure that their business is registered with the local authority:
www.gov.uk/food-business-registration

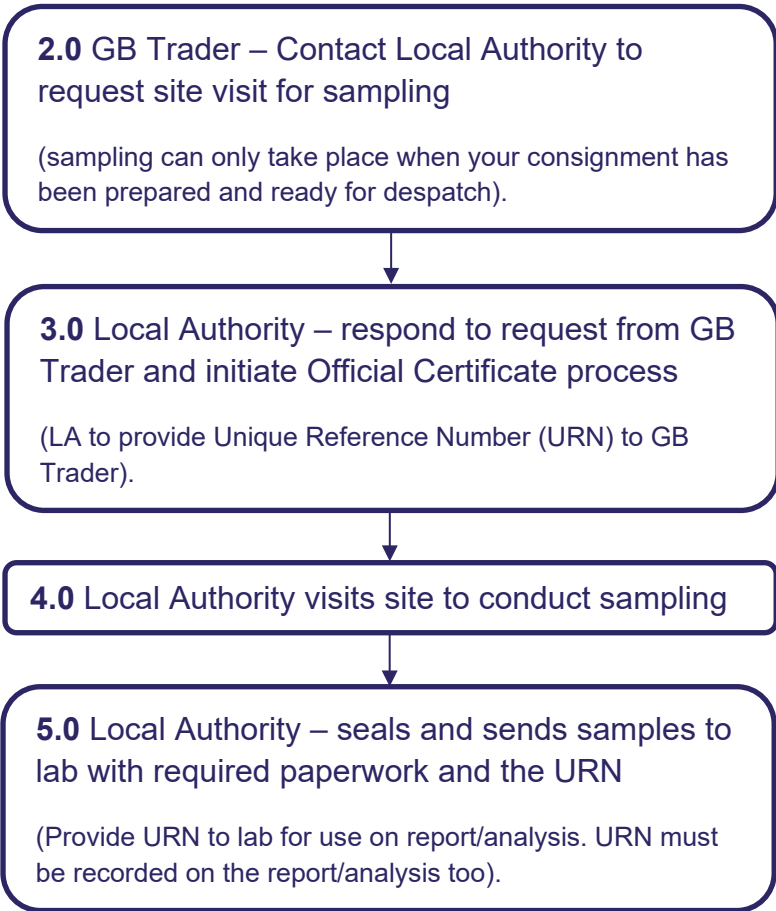
Learn more at www.gov.uk/guidance/exporting-or-moving-high-risk-food-and-feed-of-non-animal-origin-to-the-eu-or-northern-ireland



Pre-movement Requirements



Sampling and Analysis



Outcome:
Local Authority generates Unique Reference Number as per local procedures and uses to track the case (provides traceability and management information).

Outcome:
URN – generated to use throughout this process for each certificate request.
Paperwork – includes information for the lab so they know what tests to run and how.

Continue to page 3



6.0 Lab – receives samples and conduct required analysis

7.0 Lab – provide reports/analysis to Local Authority

(Lab will invoice the LA. For goods moving to the EU, the certification cost and sampling cost will be invoiced to the trader. For goods moving to NI, any costs can be recovered from the MAS scheme).

Outcome:

Format of report/analysis meets EU regulatory requirements.

8.0 Local Authority – review the lab reports/analysis and inform the GB Trader of outcome

Not Approved

8.1 Follow existing process if sample is not approved.

Approved

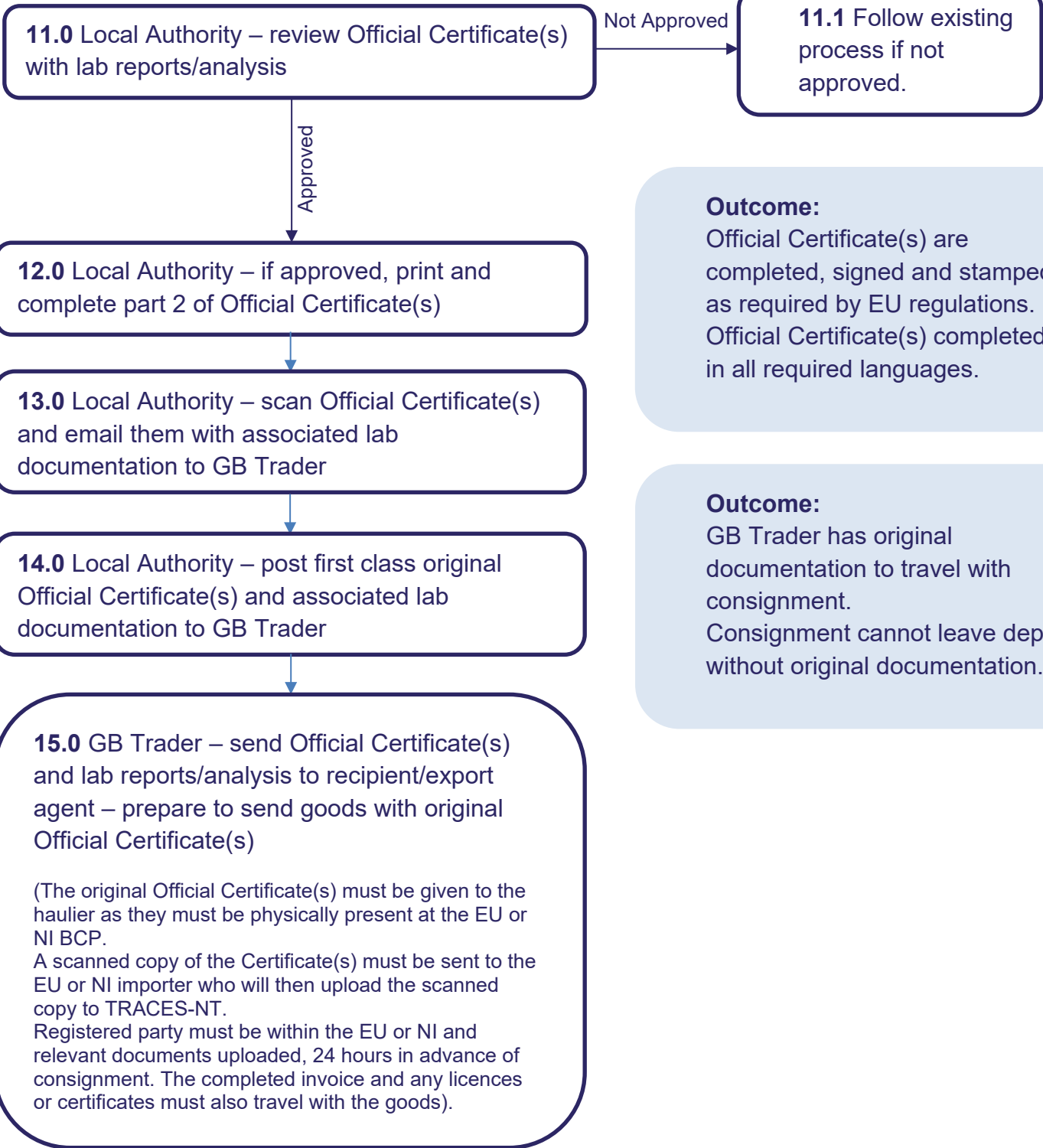
Certification Following Approval

9.0 GB Trader – download and complete part 1 of Official Certificate(s)

(Ensure Official Certificate(s) completed in English as well as the language(s) of the first entry BCP and final destination country. Ensure BCP can accept HRFNAO).

10.0 GB Trader – email Official Certificate(s) with Part 1 completed to the Local Authority

Continue to page 4

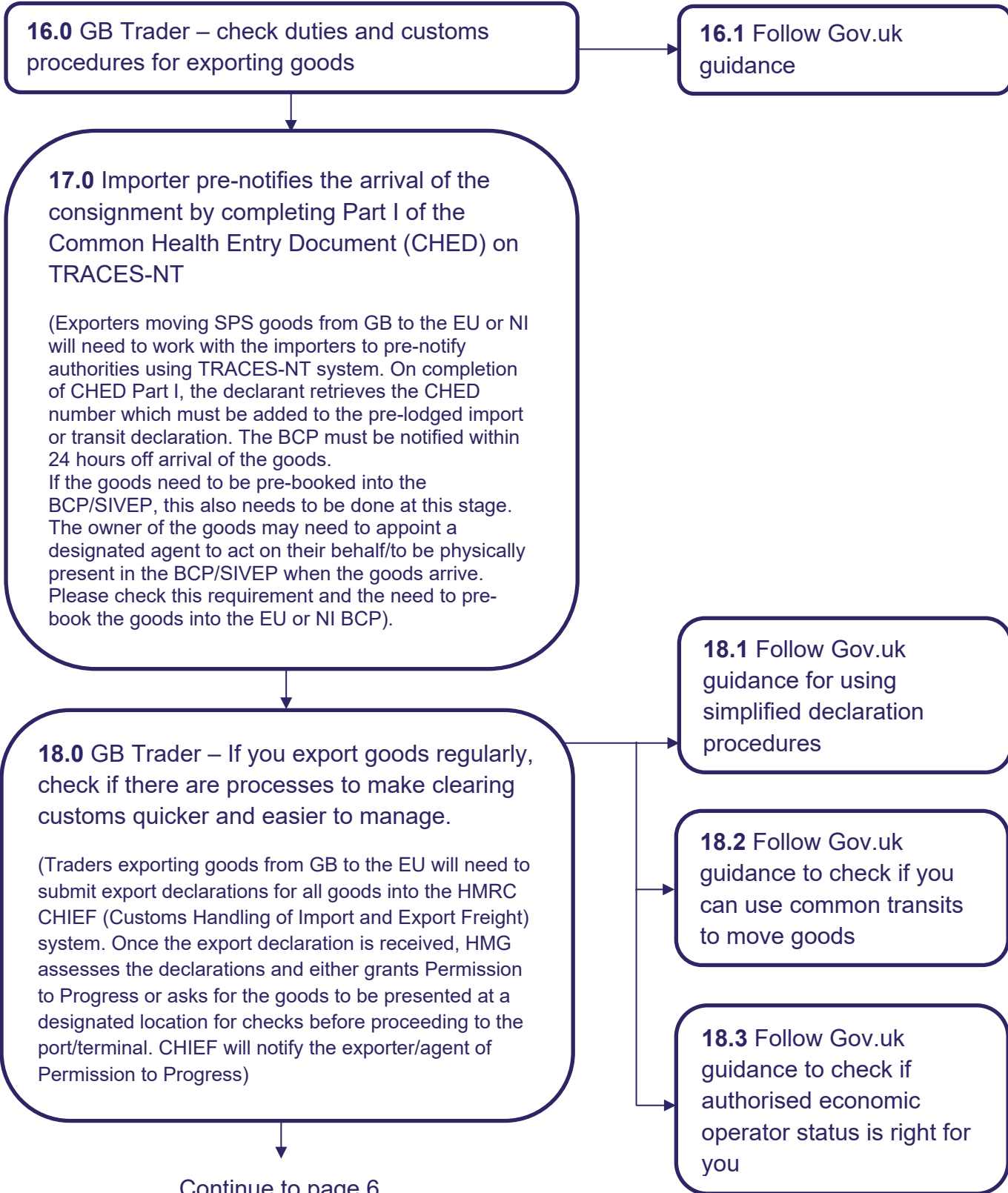


Outcome:
Official Certificate(s) are completed, signed and stamped as required by EU regulations. Official Certificate(s) completed in all required languages.

Outcome:
GB Trader has original documentation to travel with consignment. Consignment cannot leave depot without original documentation.



Pre-movement Checks





19.0 GB Trader – check whoever is receiving the goods can import them

(The business or person receiving the goods may need to make an import declaration in their country and licences or certificates to receive goods from the UK).

20.0 GB Trader – Classify your goods

20.1 Follow Gov.uk guidance to find the right commodity code for your goods

21.0 GB Trader – Decide who will make export declarations and transport the goods

(You can hire someone to deal with customs and transport the goods for you, or you can do it yourself).

21.1 Follow Gov.uk guidance to find out to hire someone to deal with customs for you

21.2 Follow Gov.uk guidance to find out how to make export declarations yourself

21.3 Follow Gov.uk guidance to find out how to transport goods out of the UK by road

22.0 GB Trader – Get your goods through customs

(If you've appointed someone to deal with UK customs for you, they'll make the declaration and get your goods through the UK border. You may need other documentation to get your goods in the destination country. Ask the person or business buying your goods what information you need to provide).

22.1 Follow Gov.uk guidance to make an export declaration and get your goods cleared by UK customs.

(You will need to make an exit summary declaration if you've not fulfilled safety and security requirements with a combined export declaration (EAD). EXS are submitted on the CHIEF in the same way as an export declaration).



Post Movement

23.0 GB Trader – Keeps invoices and records

(You must keep commercial invoices and any customs paperwork. If you're VAT registered, record the goods in your VAT accounts, even if they are zero-rated).



24.0 Arrival at EU or NI BCP

(Documentary checks. Identity checks/Physical checks undertaken at a frequency set by regulation (including sampling). BCP updates TRACES-NT. The outcome of the checks are recorded on Part II of the CHED on TRACES. Declaration made to customs by person responsible for the consignment. Goods are released from customs and continue their journey).

Outcome:

Management information exists to show data such as numbers of certificates issued, volumes of consignments etc.

Glossary:

BCP – Border Control Post
CHED – Common Health Entry Document
CHIEF – Customs Handling of Import and Export Freight
EAD – Export Accompanying Document
EORI – Economic Operators Registration and Identification number
EU – European Union
EXS – Exit Summary Declaration
GB – Great Britain
HMG – Her Majesty's Government
HMRC – Her Majesty's Revenue and Customs

HRFNAO – High-Risk Foods and Feed of Non-Animal Origin
LA – Local Authority
MAS – Movement Assistance Scheme
NI – Northern Ireland
SIVEP – Department of veterinary and phytosanitary border control
SPS – Sanitary and Phytosanitary
STAMNI – Scheme for Temporary Agri-food Movements to Northern Ireland
TRACES-NT – Trade Control and Expert System - New Technology
UK – United Kingdom
URN – Unique Reference Number
VAT – Value-added tax